



Briggs and Stratton locks used in our GMC's

Joe Ekl

Professional Locksmith

Member of GMCES and GMCFI



Briggs and Stratton locks used in our GMC's

Door

Glove
Box



Ignition

Utility



Keys not turning usually one of three things.

- Inserting the wrong key.
- Worn key.
- Wafer retainer damaged.

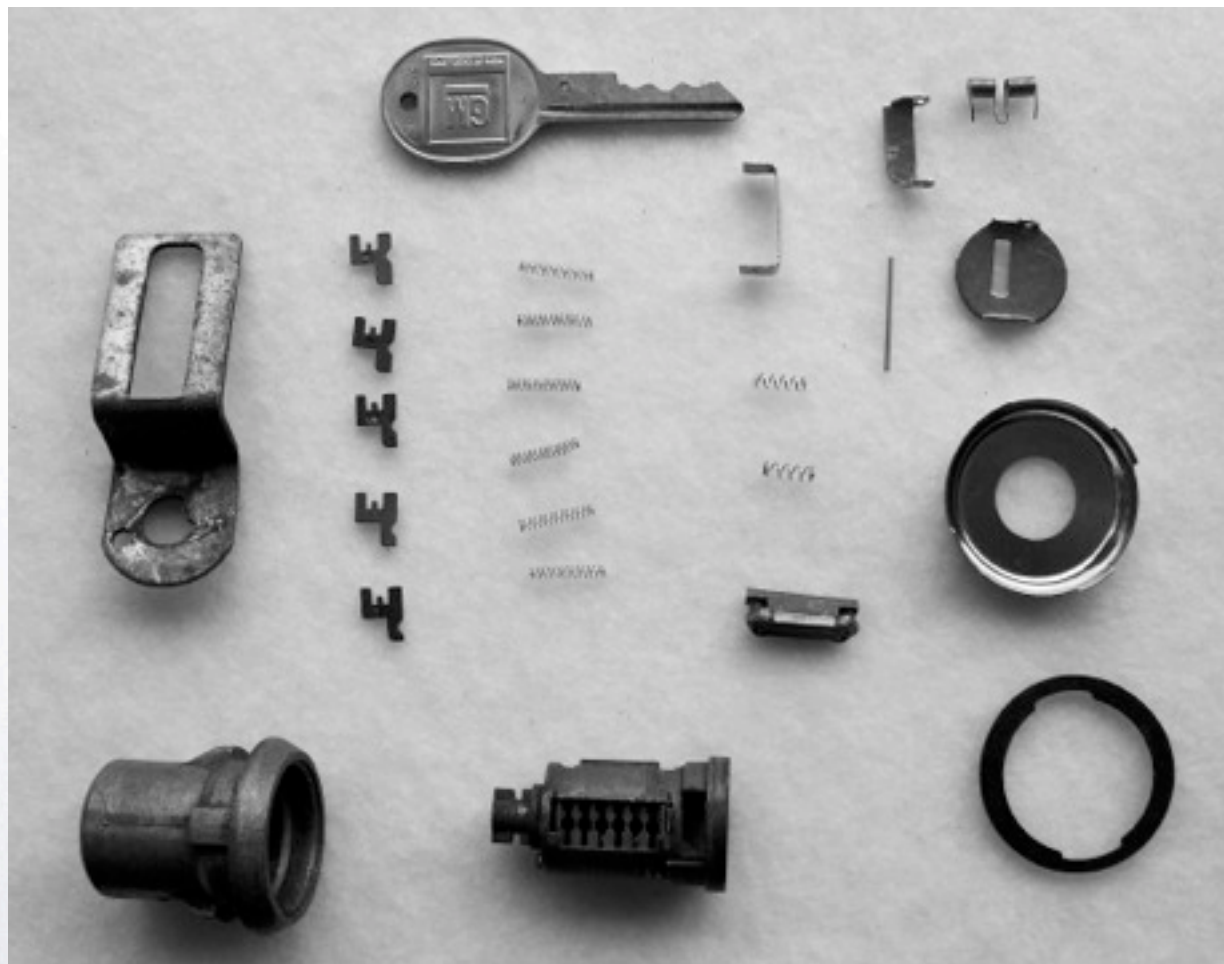


Solutions

- Use the right key.
 - Check to see if you might be trying to use a key from another GM vehicle. GM used the same letter keys in all GM cars and trucks from 1967 to 1994. The sequence of the letter keys were repeated every 4 years.
- Get a key cut to factory size.
 - Go to a locksmith or GM dealer.
- Do not duplicate a worn key.
 - Repair or replace the lock.



Components of the door locks.
This lock is a side-bar wafer lock.



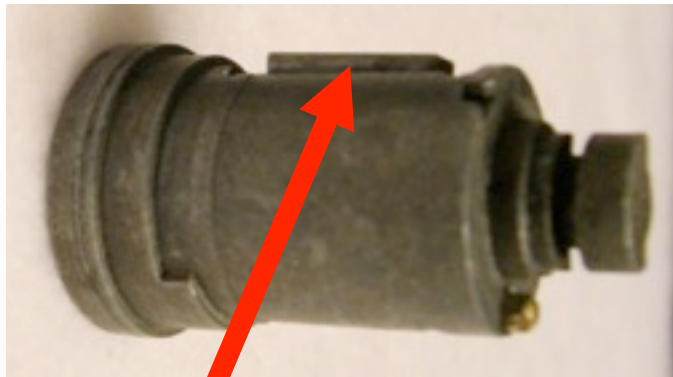
Keys shown for
comparison of size
of components.
The size of the
springs are
.085" dia. X .437
long



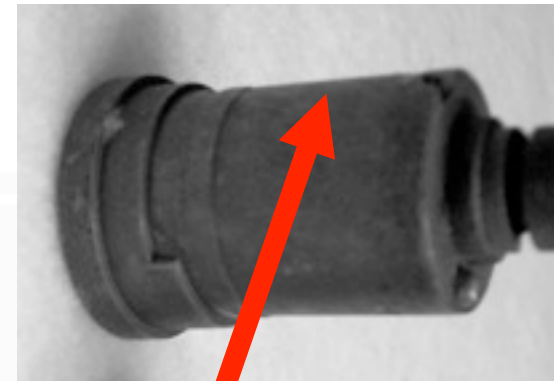
Components of the ignition cylinder. This lock is a side-bar wafer lock.



Side bar wafer locks

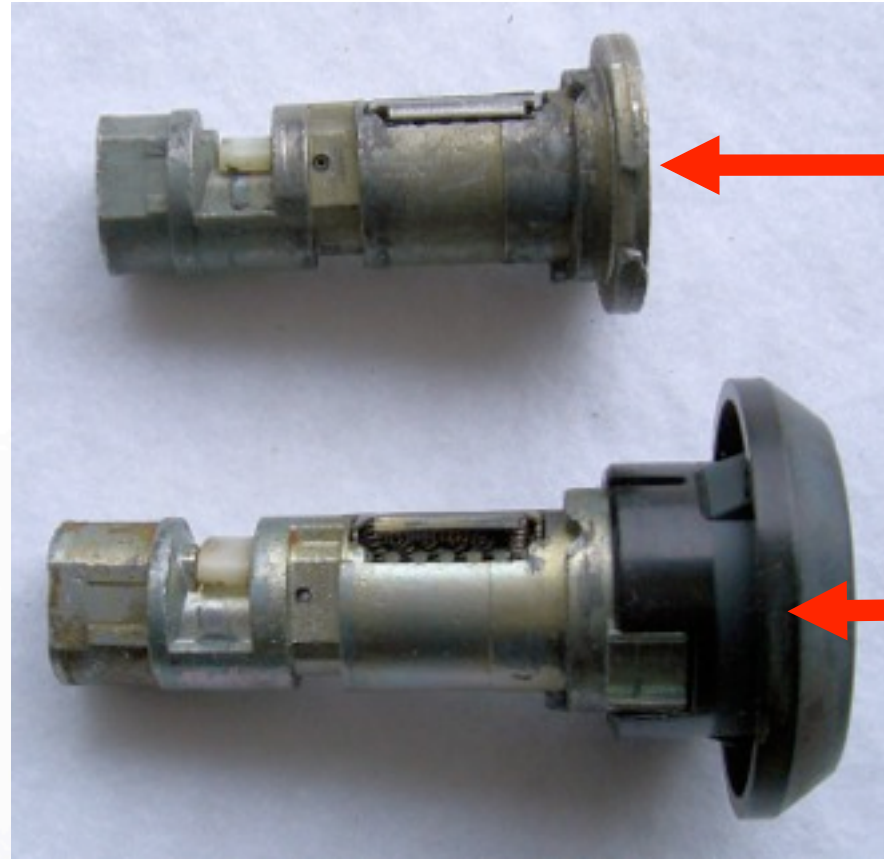


The side bar is out when the key is removed, and the plug will not turn.



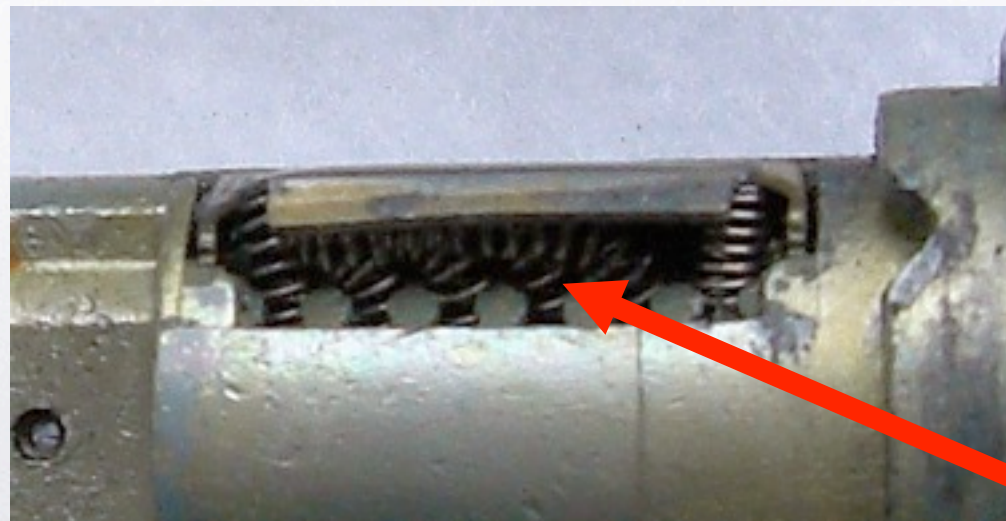
When the correct key is inserted, the bar retracts and plug can rotate.

Bad Ignition cylinder



Good
cylinder

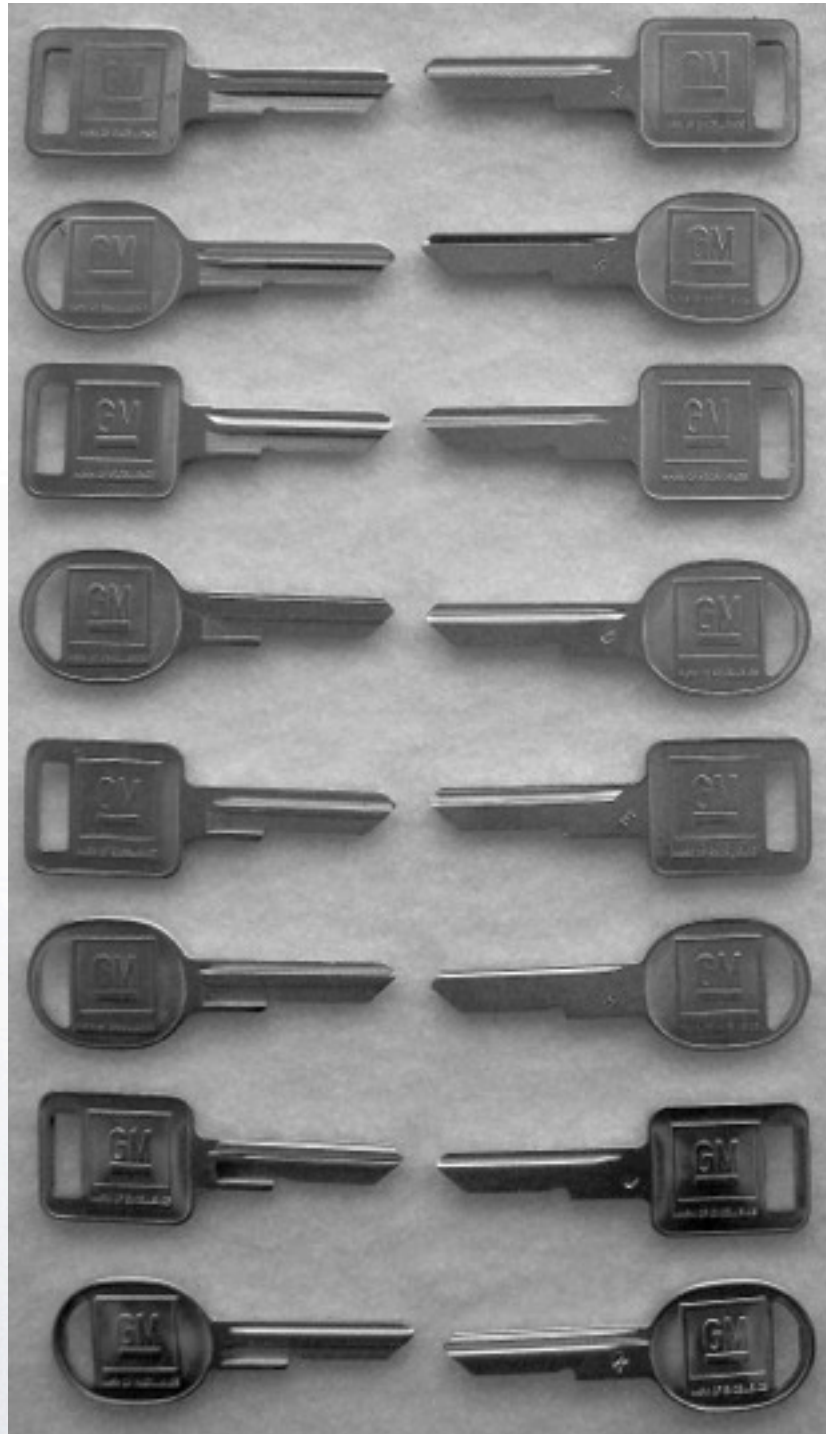
Bad cylinder



Spring and wafer retainer, note twisted springs



Letter keys 1973 to 1978



“A” 1975

“B” 1975

“C” 1976

“D” 1976

“E” 1973 and 1977

“H” 1973 and 1977

“J” 1974 and 1978

“K” 1974 and 1978

Depth of cuts on keys

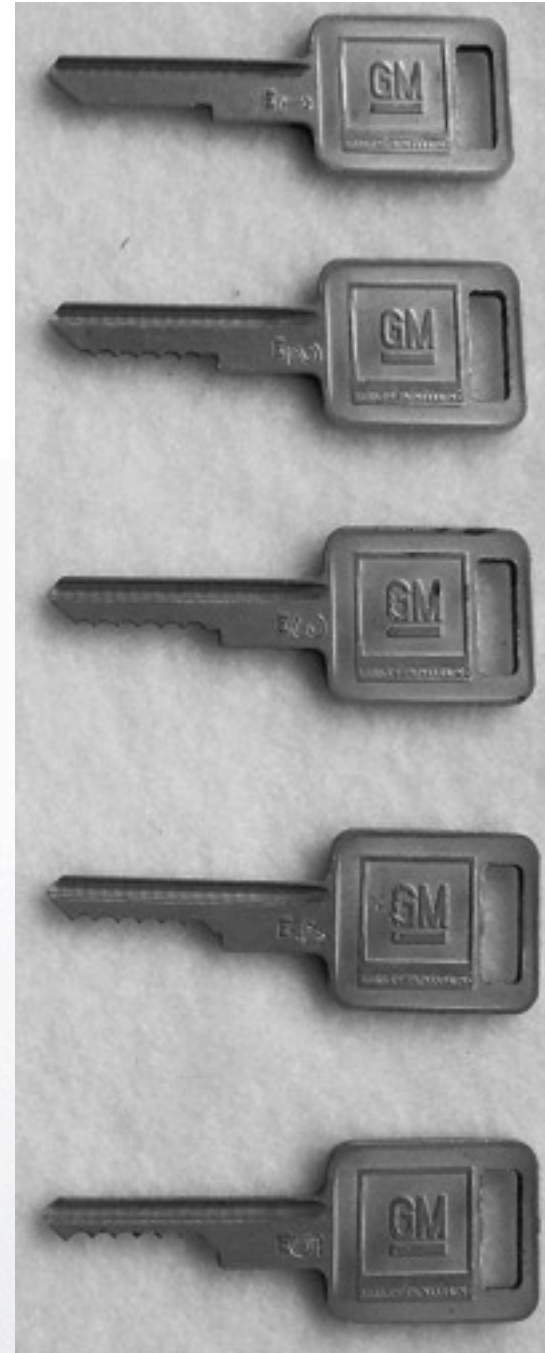
#1 cut = .250"

#2 cut = .225"

#3 cut = .200"

#4 cut = .175"

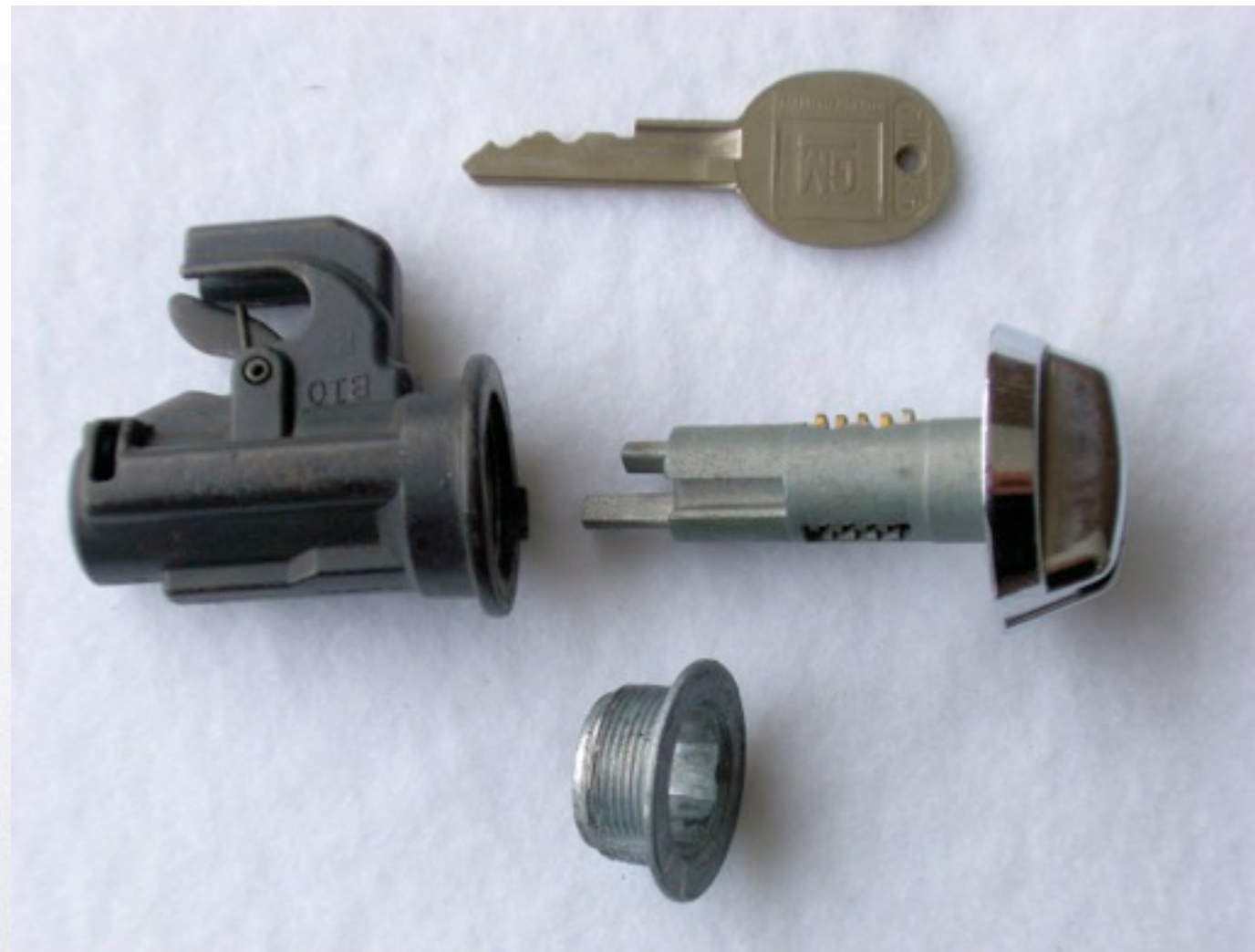
#5 cut = .150"



Sometimes worn keys will still work even though they are worn up to .012". The depth between cuts are .025"



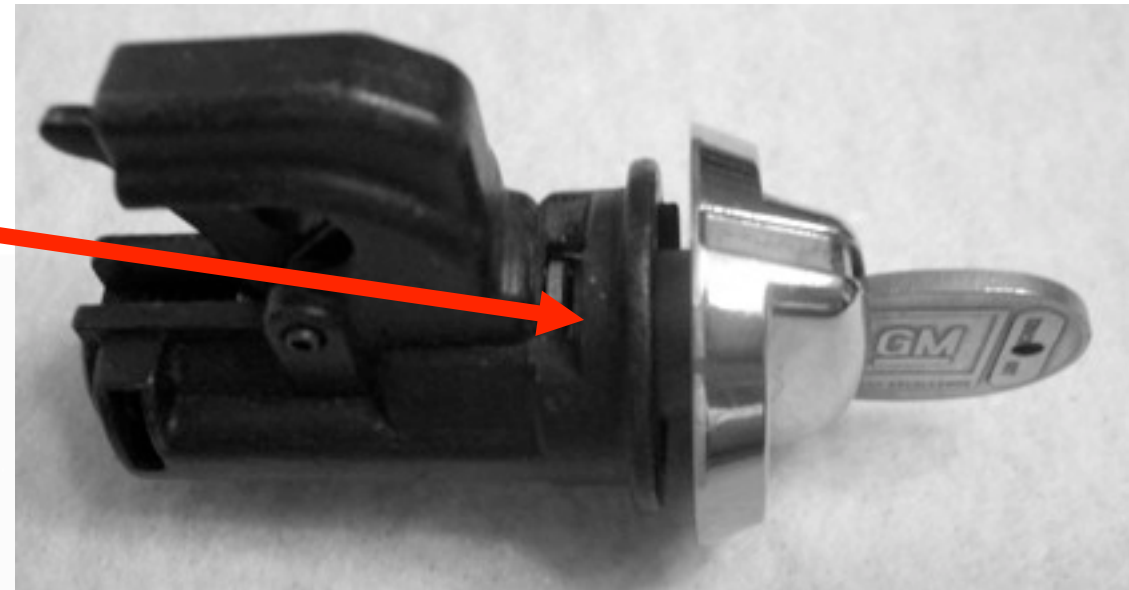
Components of the glove box lock.



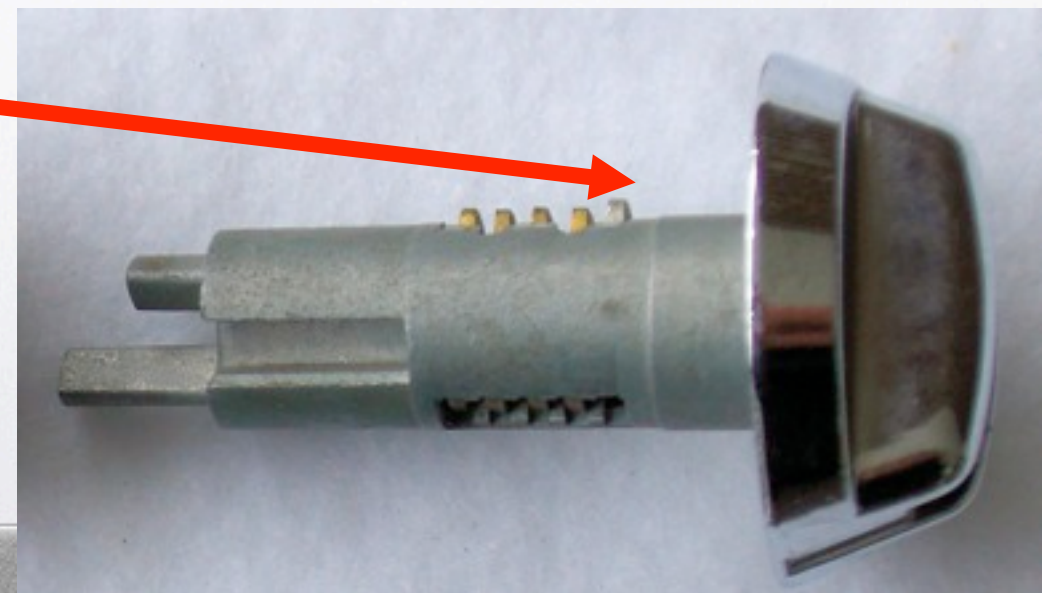
This is a disc tumbler lock.

Removal of glove box lock

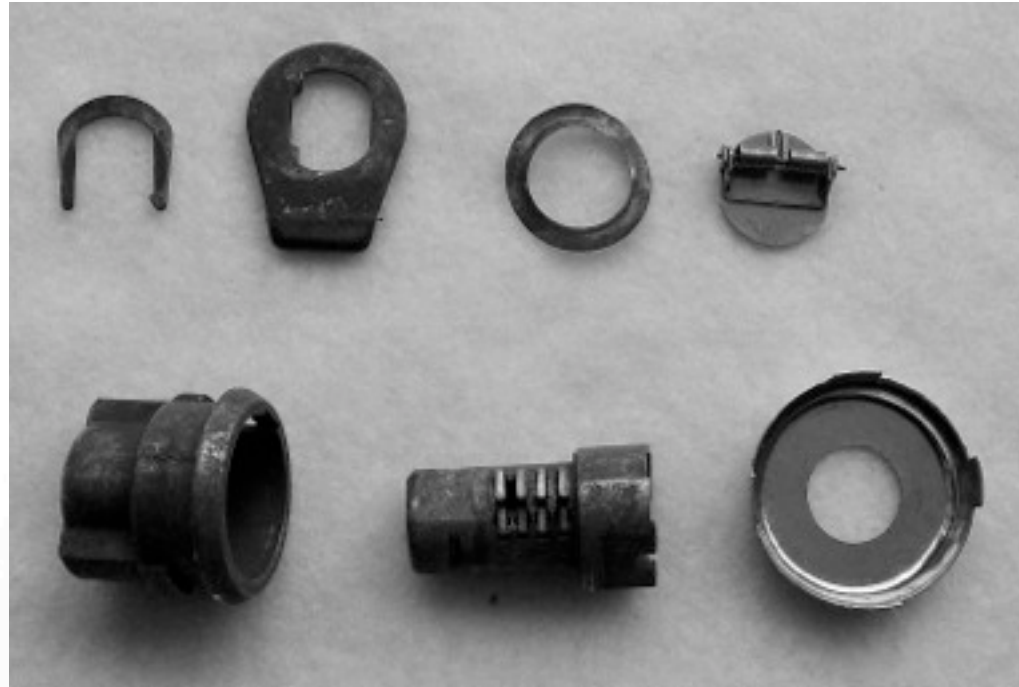
To remove plug
push in disc while
pulling out cylinder.



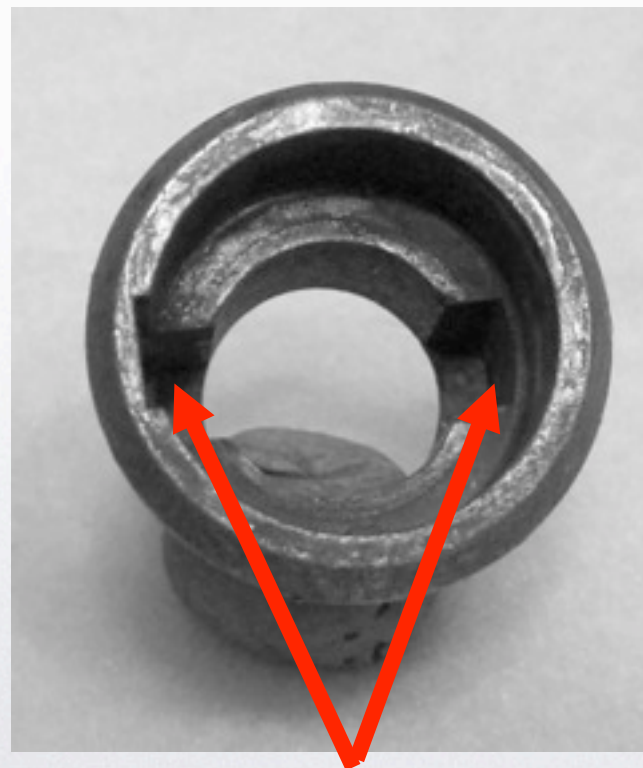
This is the disc you
push in, usually it is
silver in color.



Utility door locks

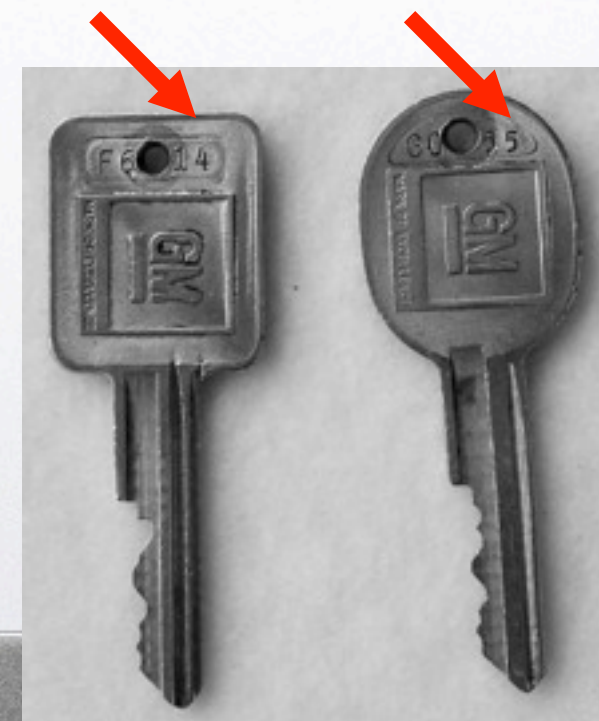
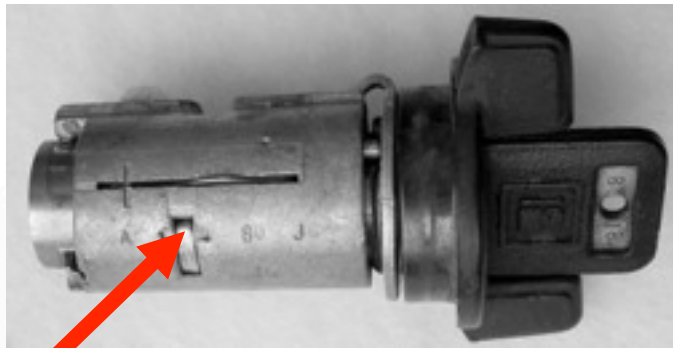


This lock is a disc tumbler lock.



Lock case has 2 slots for disc to go into so you can remove the keys in 2 different places.

Location of codes on locks and keys



Number of different codes on locks

- There are 6 cuts and 5 depths per key.
- $5 \times 5 \times 5 \times 5 \times 5 \times 5 = 15,625$ possible codes
- There were only 3,000 codes that GM could use.
- You can not use all 1s or all 2s or all 3s etc.
- You can not use a 1 cut with a 4 or 5 cut because of the angle on the cuts, nor can you use a 2 cut with a 5 cut.



Page from the code book

00J0-99J9 GM

Keyblanks:

Original 320404
Ilco P1098E
Curtis B44

225J	30J0	35J0
25J0 454245	30J0 434355	35J0 131342
25J1 312444	30J1 343323	35J1 213231
25J2 444323	30J2 234432	35J2 223133
25J3 322421	30J3 313131	35J3 343235
25J4 313212	30J4 443445	35J4 132312
25J5 543224	30J5 113221	35J5 453545
25J6 113322	30J6 332334	35J6 243331
25J7 134534	30J7 313221	35J7 242354
25J8 342232	30J8 213442	35J8 443212
25J9 555454	30J9 443331	35J9 545424
26J0 212335	31J0 244222	36J0 543435
26J1 112242	31J1 312424	36J1 355344
26J2 344223	31J2 213433	36J2 532444
26J3 454232	31J3 232454	36J3 432445
26J4 124221	31J4 554211	36J4 322111
26J5 355353	31J5 442343	36J5 542333
26J6 332235	31J6 543334	36J6 113531
26J7 535535	31J7 322243	36J7 222442
26J8 313544	31J8 443313	36J8 324423
26J9 124421	31J9 113353	36J9 234535
27J0 135553	32J0 345442	37J0 313243
27J1 355342	32J1 312112	37J1 335432
27J2 533445	32J2 422213	37J2 211332
27J3 244345	32J3 122353	37J3 221234
27J4 534422	32J4 423443	37J4 132345
27J5 322353	32J5 453224	37J5 334334
27J6 435444	32J6 232443	37J6 445553



Cutters used to cut keys from code



Curtis
clipper



Pak-A-Punch

Cleaning and lubing locks

This cleaner dissolves oil and the dirt runs out of the lock. It dries fast and leaves no residue. Use **only** powdered graphite to lube locks.



Products not to use in locks



Do not use any product that contains oil

